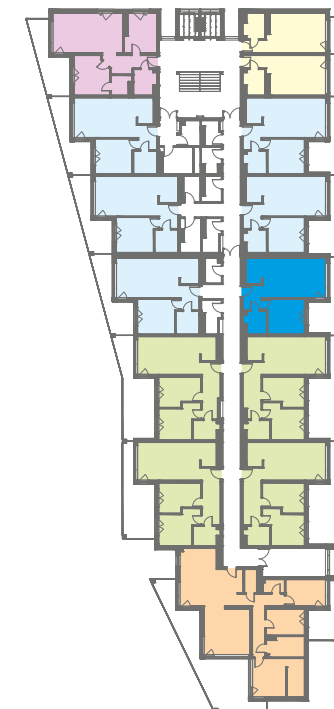
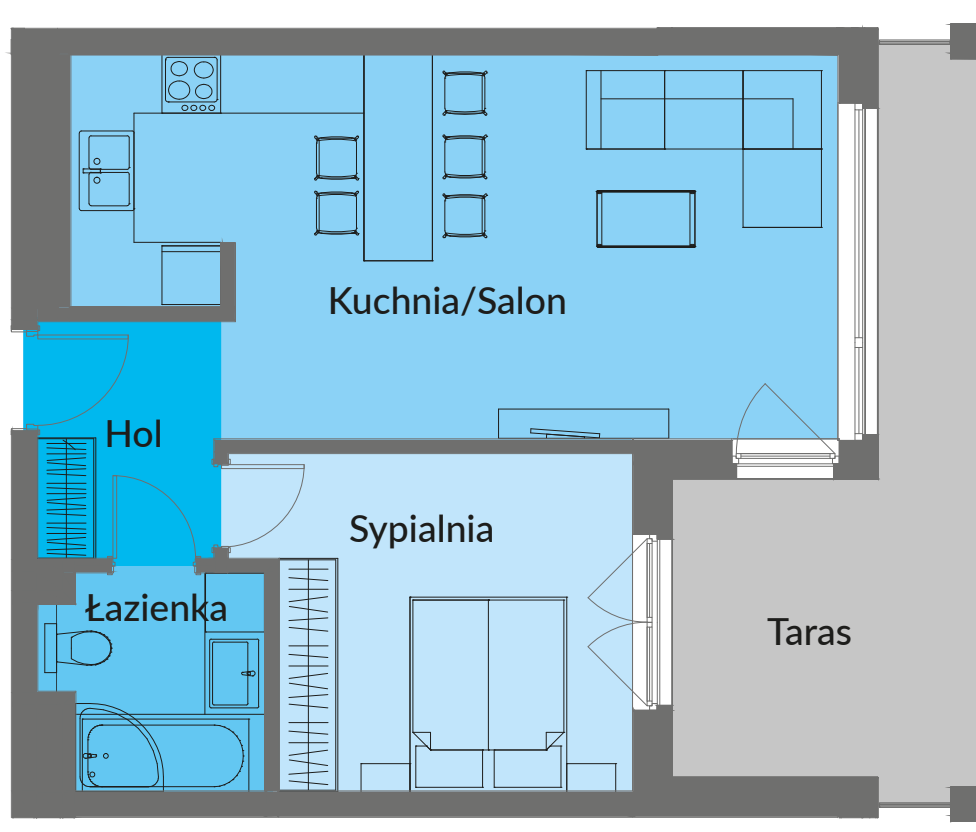


NOWE PRZYLEŚIE



# MIESZKANIE B 405

BUDYNEK B PIĘTRO IV - 50,72 m<sup>2</sup>



Salon/Kuchnia	28,44 m <sup>2</sup>
Sypialnia	13,01 m <sup>2</sup>
Łazienka	4,65 m <sup>2</sup>
Hol	4,62 m <sup>2</sup>
<b>RAZEM</b>	<b>50,72 m<sup>2</sup></b>
Taras	14,92 m <sup>2</sup>