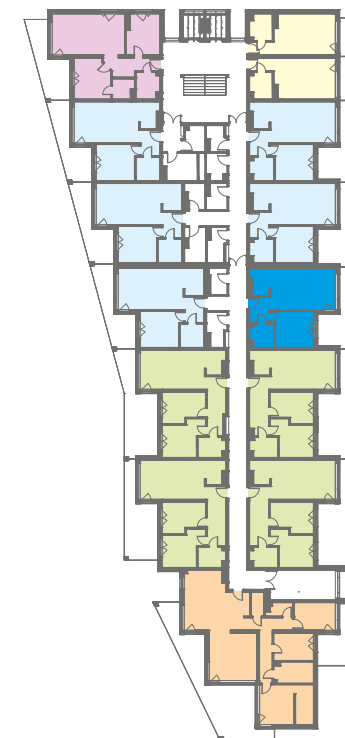
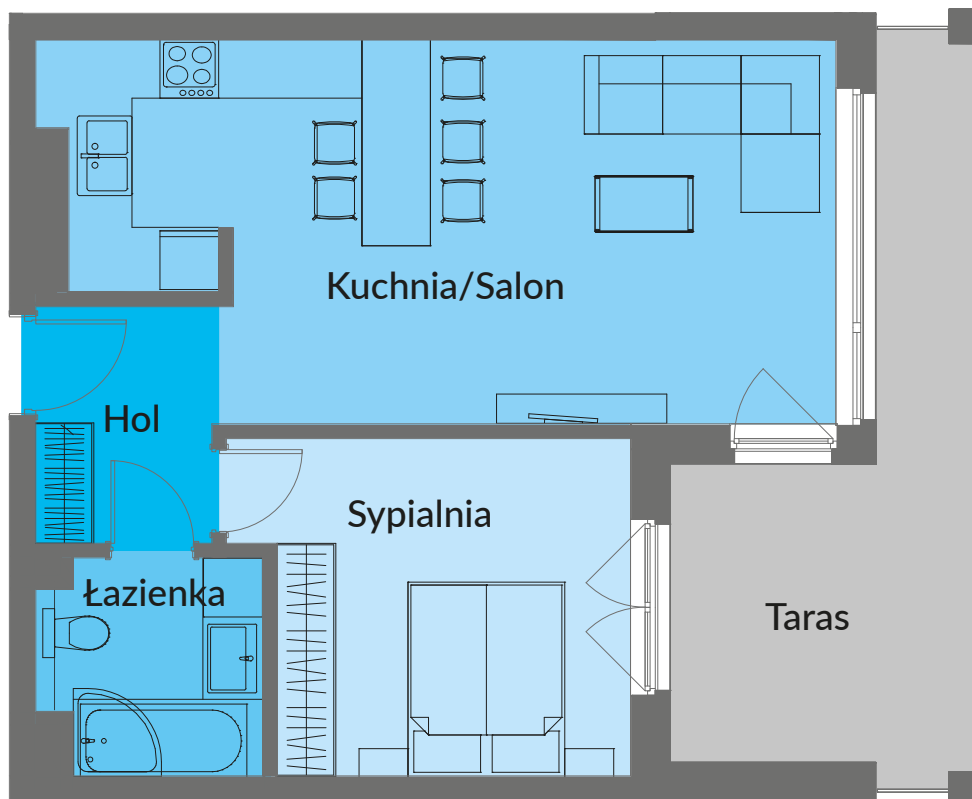


NOWE PRZYLESIE



# MIESZKANIE B 205

BUDYNEK B PIĘTRO II - 51,17 m<sup>2</sup>



Salon/Kuchnia	28,75 m <sup>2</sup>
Sypialnia	13,01 m <sup>2</sup>
Łazienka	4,79 m <sup>2</sup>
Hol	4,62 m <sup>2</sup>
<b>RAZEM</b>	<b>51,17 m<sup>2</sup></b>
Taras	14,92 m <sup>2</sup>