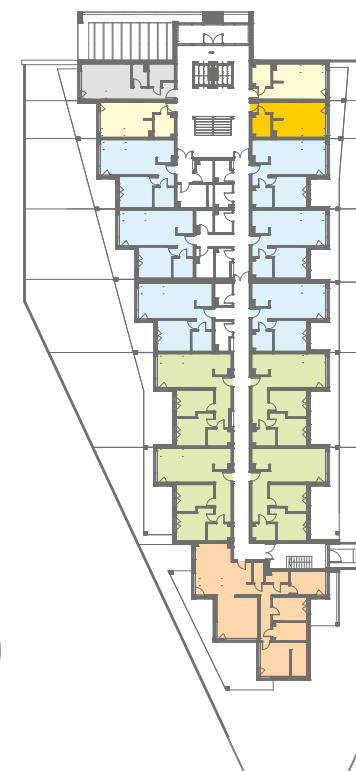
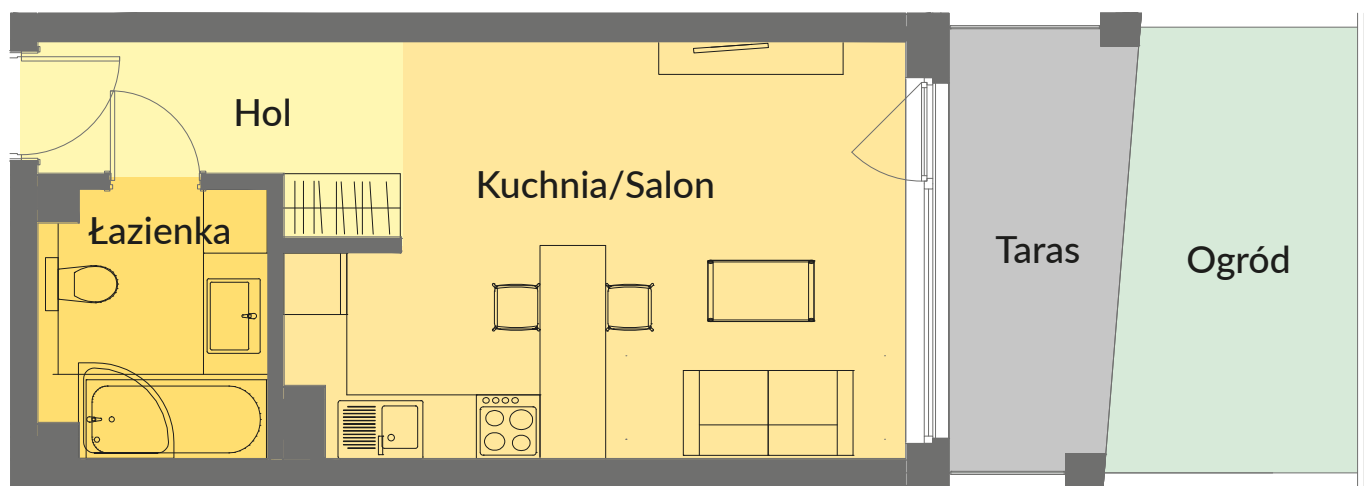


NOWE PRZYLESIE



# MIESZKANIE B 2

BUDYNEK B PARTER – 30,74 m<sup>2</sup>



Salon/Kuchnia	20,57 m <sup>2</sup>
Łazienka	5,26 m <sup>2</sup>
Hol	4,91 m <sup>2</sup>
<b>RAZEM</b>	<b>30,74 m<sup>2</sup></b>
Taras/Ogród	16,06 m <sup>2</sup>