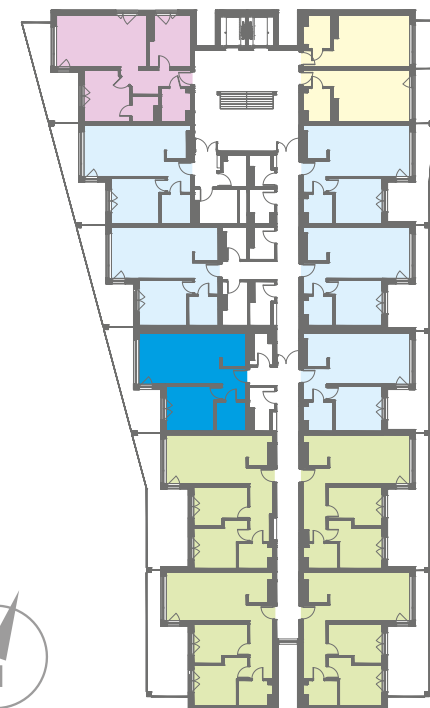
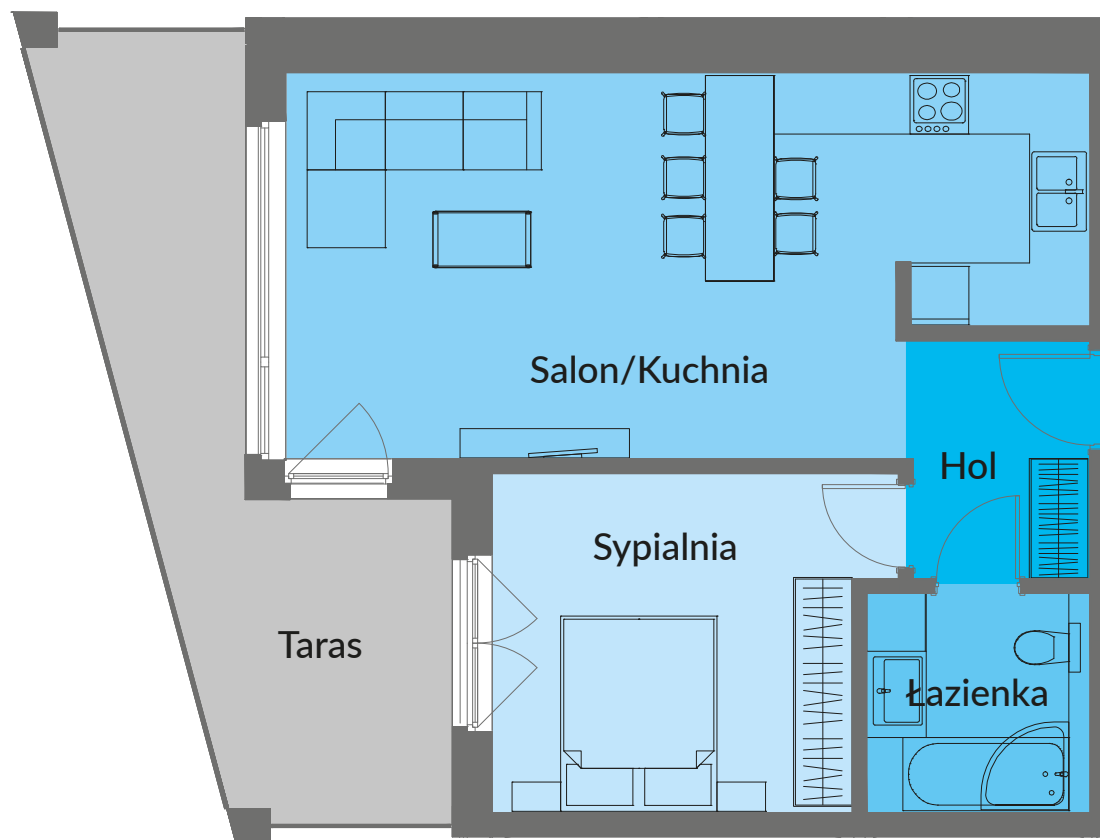


NOWE PRZYLESIE



# MIESZKANIE A 310

BUDYNEK A PIĘTRO III - 52,14 m<sup>2</sup>



Salon/Kuchnia	29,39 m <sup>2</sup>
Sypialnia	13,13 m <sup>2</sup>
Łazienka	5,06 m <sup>2</sup>
Hol	4,56 m <sup>2</sup>
<b>RAZEM</b>	<b>52,14 m<sup>2</sup></b>
Taras	16,85 m <sup>2</sup>