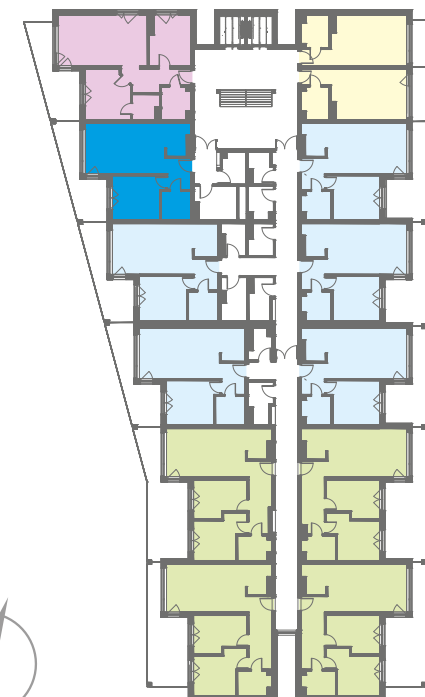
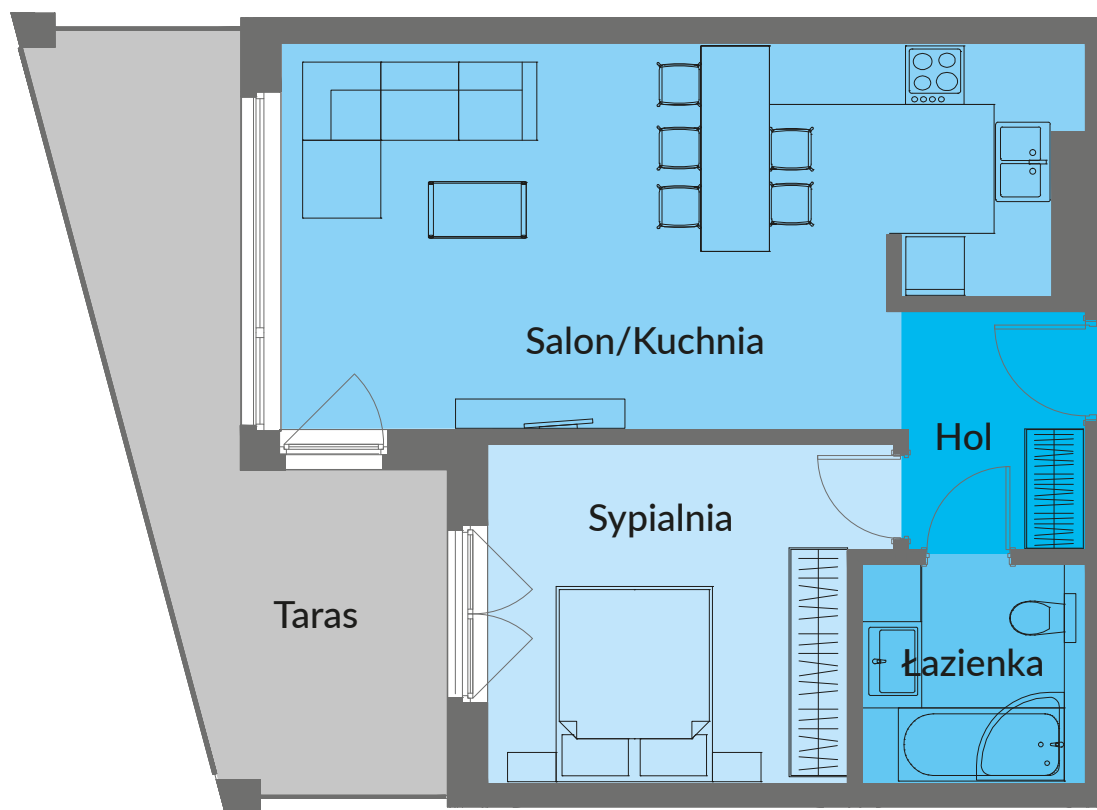


NOWE PRZYLESIE



# MIESZKANIE A 212

BUDYNEK A PIĘTRO II - 51,56 m<sup>2</sup>



Salon/Kuchnia	28,75 m <sup>2</sup>
Sypialnia	13,13 m <sup>2</sup>
Łazienka	5,06 m <sup>2</sup>
Hol	4,62 m <sup>2</sup>
<b>RAZEM</b>	<b>51,56 m<sup>2</sup></b>
Taras	16,61 m <sup>2</sup>