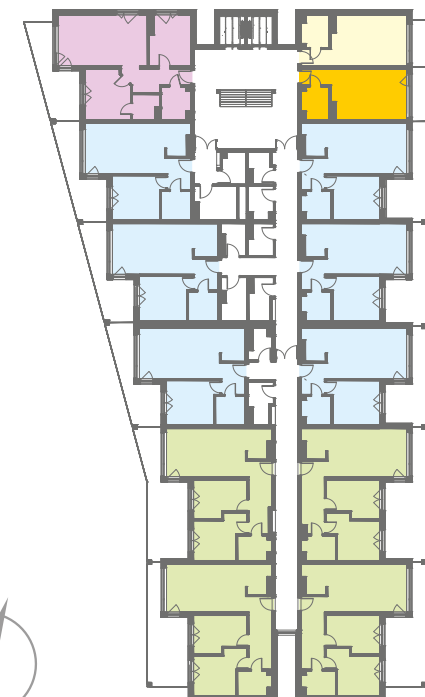
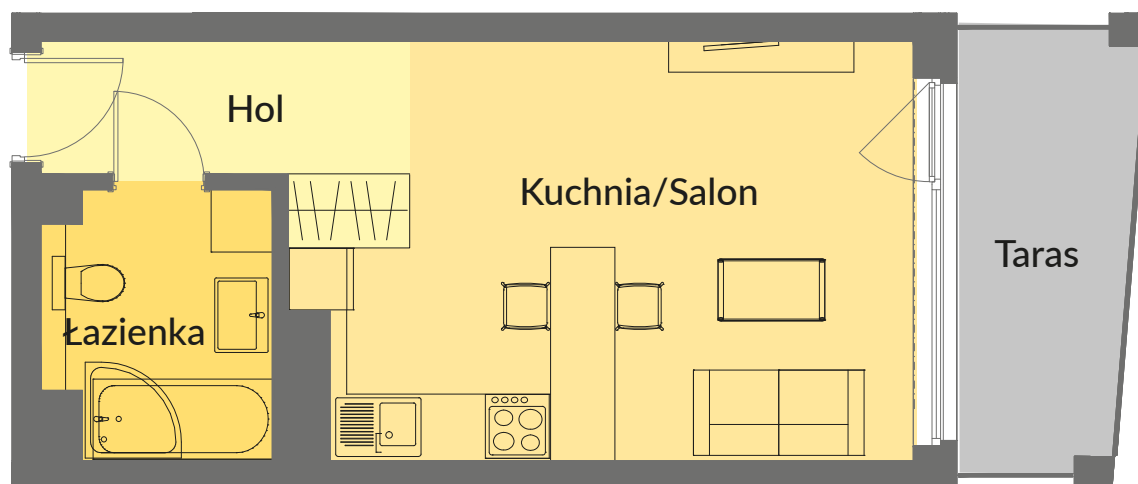


NOWE PRZYLESIE



# MIESZKANIE A 202

BUDYNEK A PIĘTRO II – 30,49 m<sup>2</sup>



Salon/Kuchnia	20,40 m <sup>2</sup>
Łazienka	5,13 m <sup>2</sup>
Hol	4,96 m <sup>2</sup>
<b>RAZEM</b>	<b>30,49 m<sup>2</sup></b>
Taras	6,74 m <sup>2</sup>