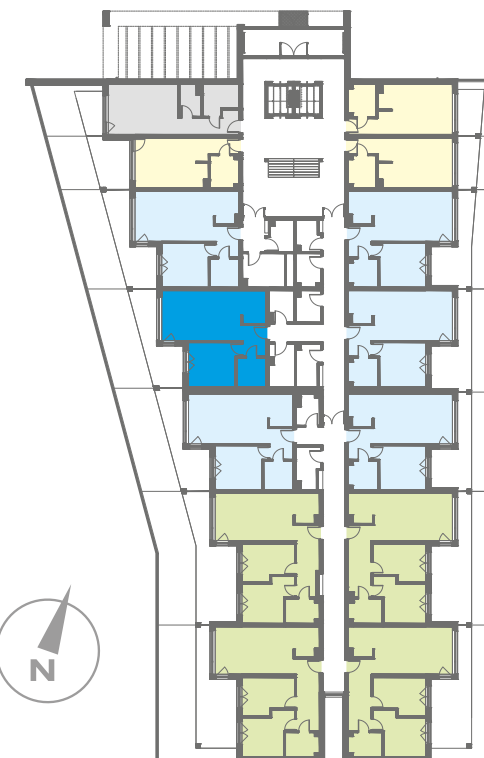
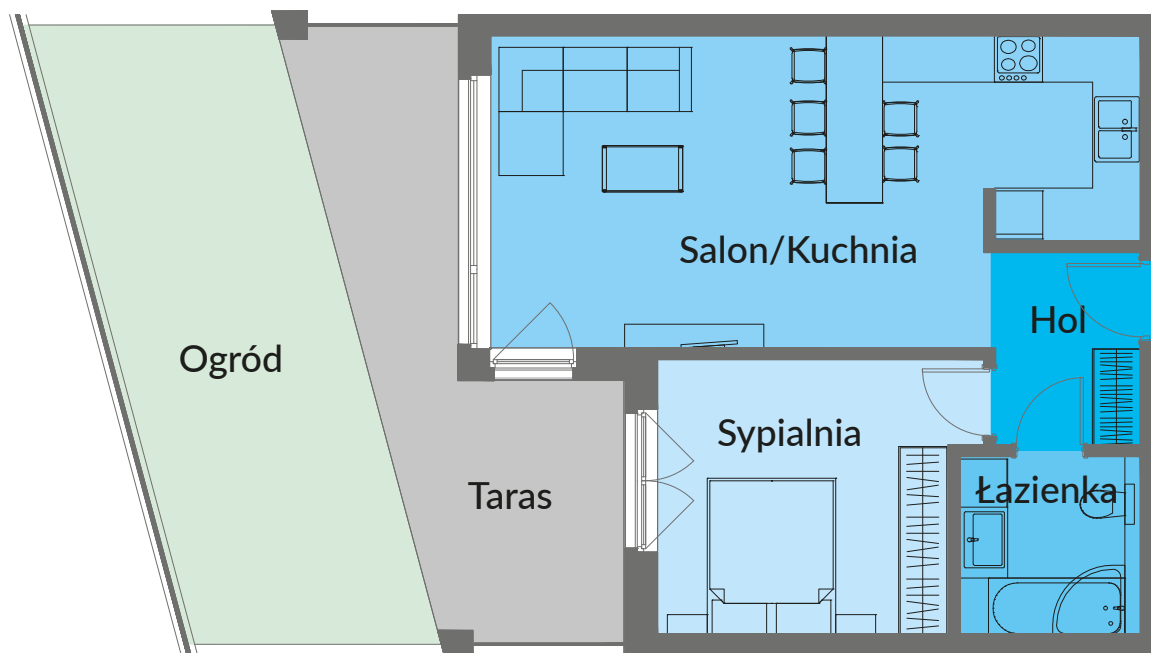


NOWE PRZYLESIE



# MIESZKANIE A 11

BUDYNEK A PARTER – 52,15 m<sup>2</sup>



Salon/Kuchnia	29,39 m <sup>2</sup>
Sypialnia	13,11 m <sup>2</sup>
Łazienka	5,06 m <sup>2</sup>
Hol	4,59 m <sup>2</sup>
<b>RAZEM</b>	<b>52,15 m<sup>2</sup></b>
Taras/Ogród	40,92 m <sup>2</sup>