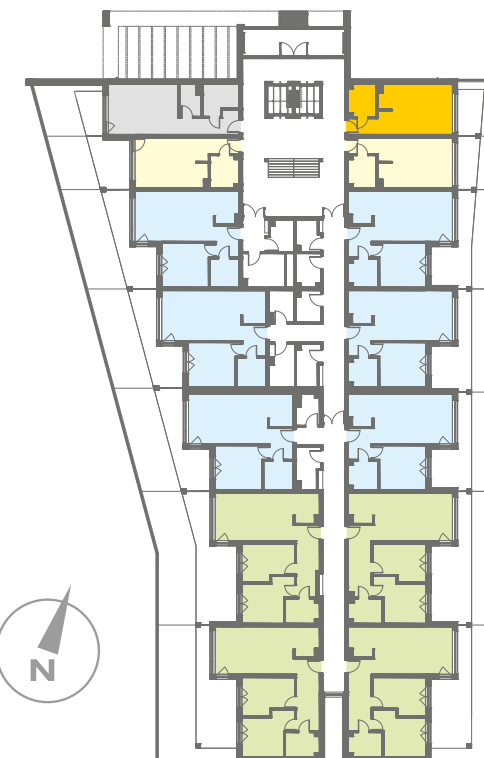


NOWE PRZYLESIE



# MIESZKANIE A 1

BUDYNEK A PARTER – 30,73 m<sup>2</sup>



Salon/Kuchnia	20,57 m <sup>2</sup>
Łazienka	5,25 m <sup>2</sup>
Hol	4,91 m <sup>2</sup>
<b>RAZEM</b>	<b>30,73 m<sup>2</sup></b>
Taras/Ogród	12,99 m <sup>2</sup>